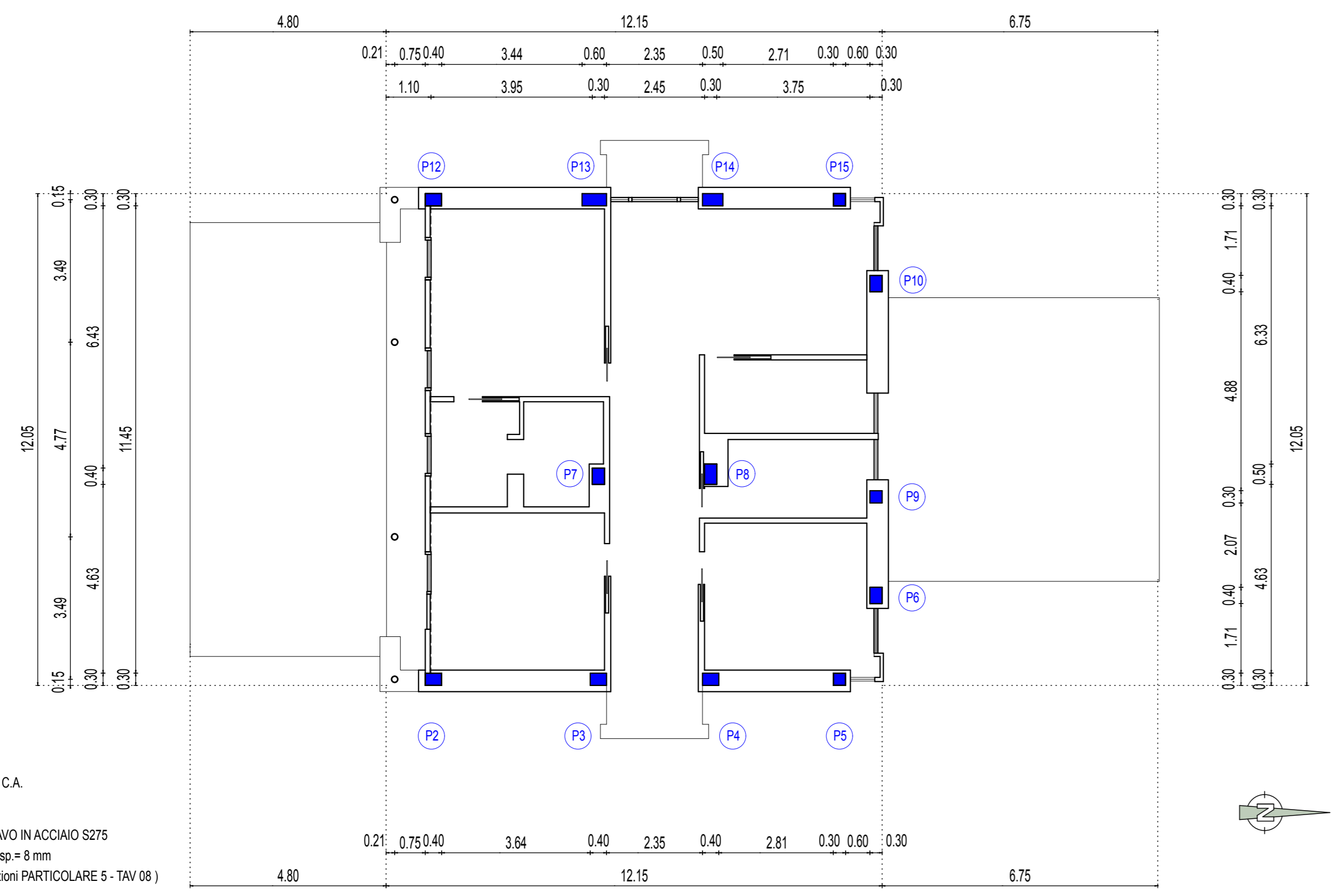


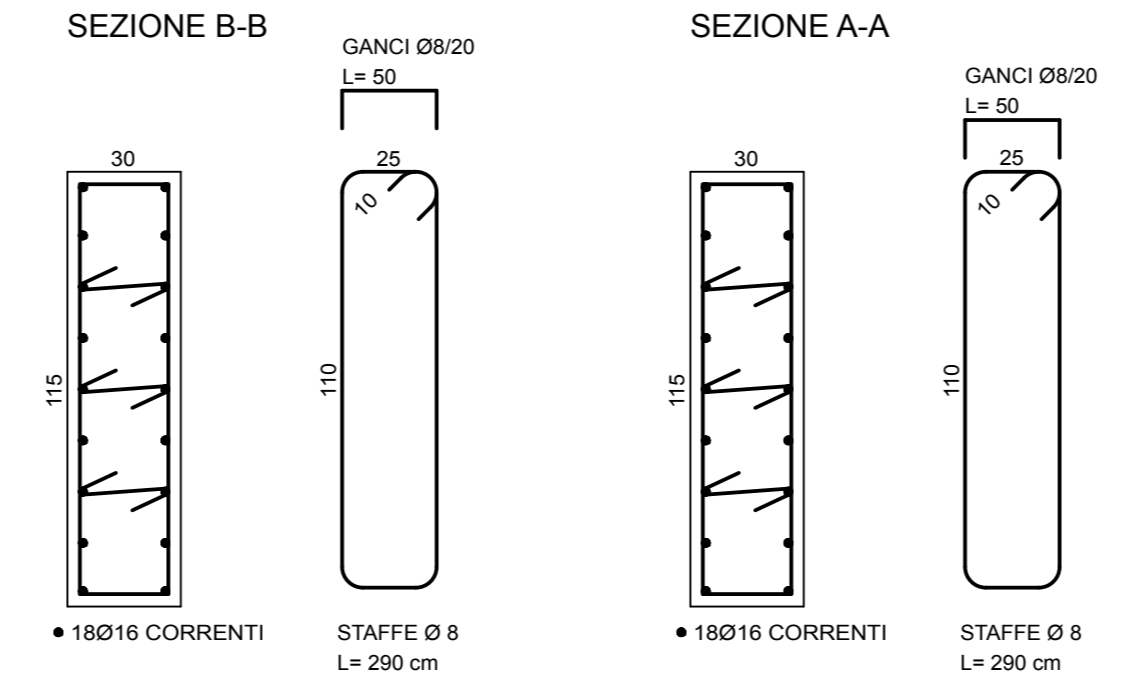
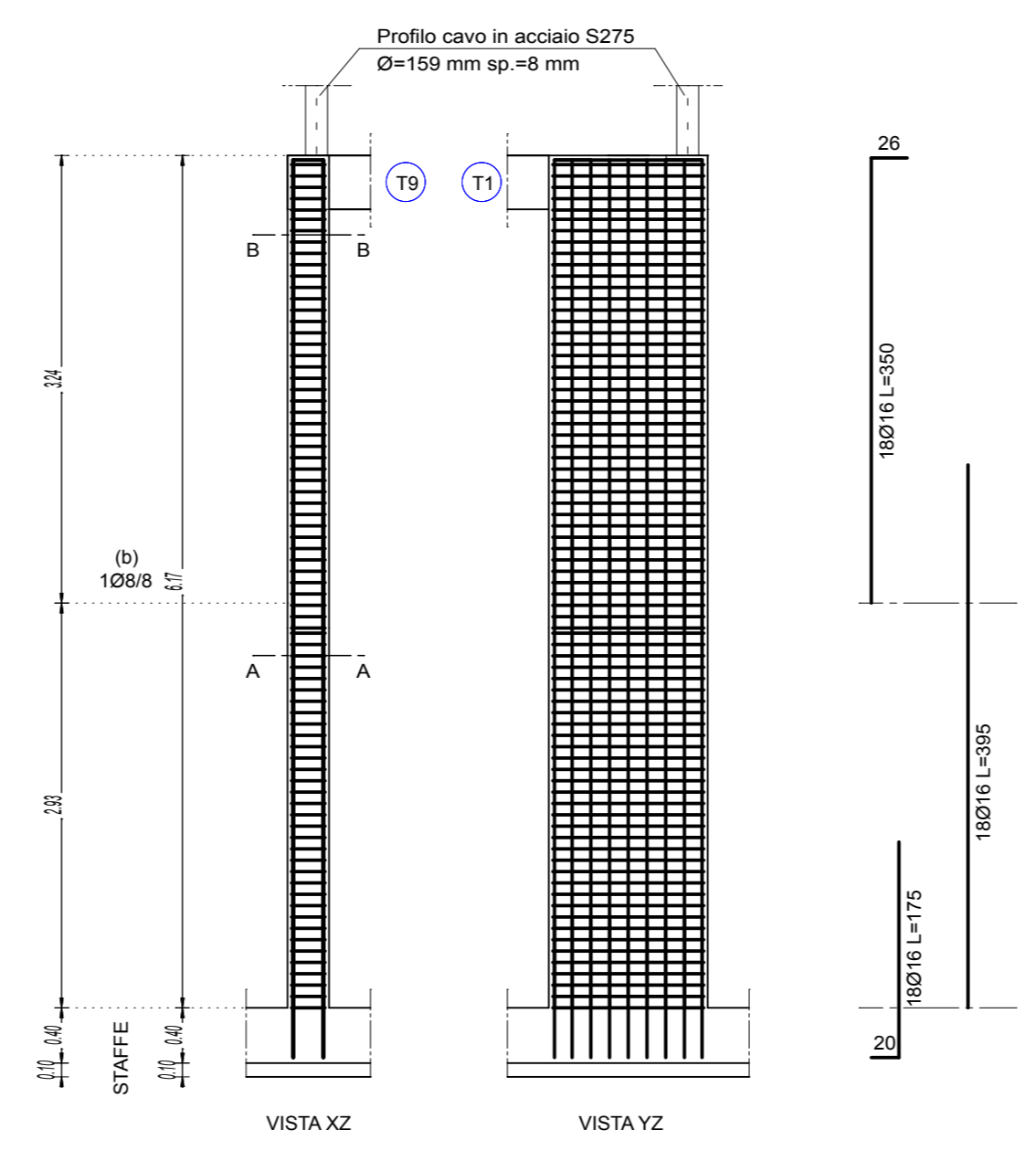
PIANTA PIANO PRIMO scala 1:100



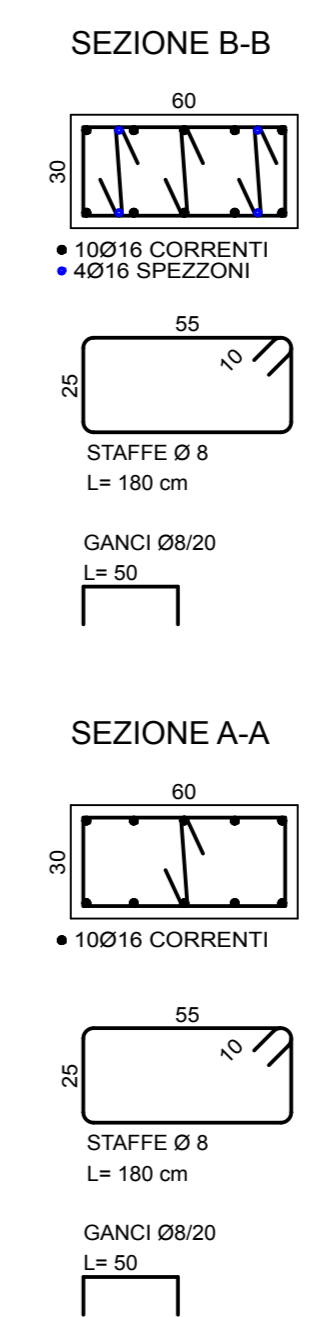
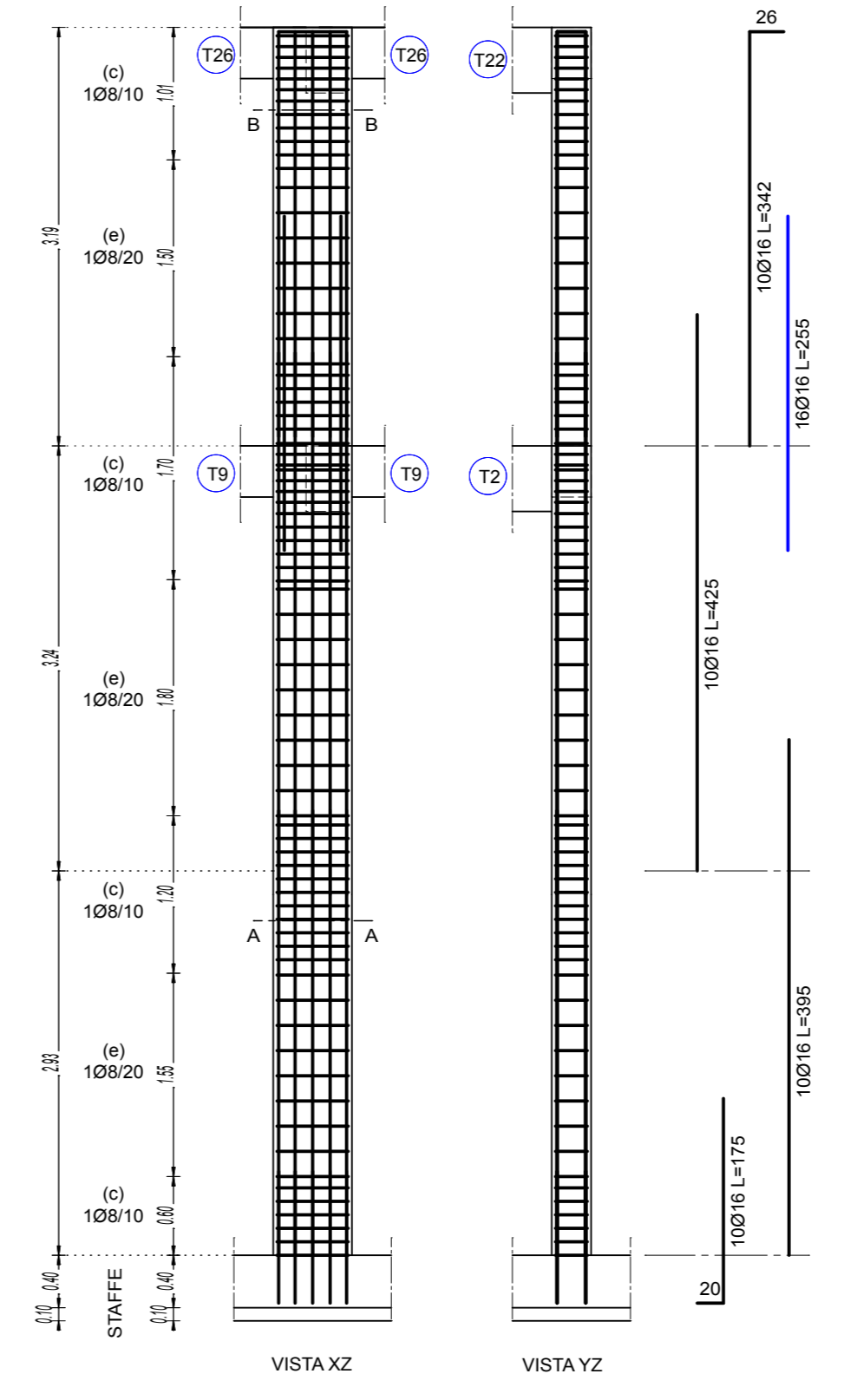
PILASTRI IN C.A.

PROFILO CAVO IN ACCIAIO S275
 Ø=159 mm, sp.=8 mm
 (vedi prescrizioni PARTICOLARE 5 - TAV 08)

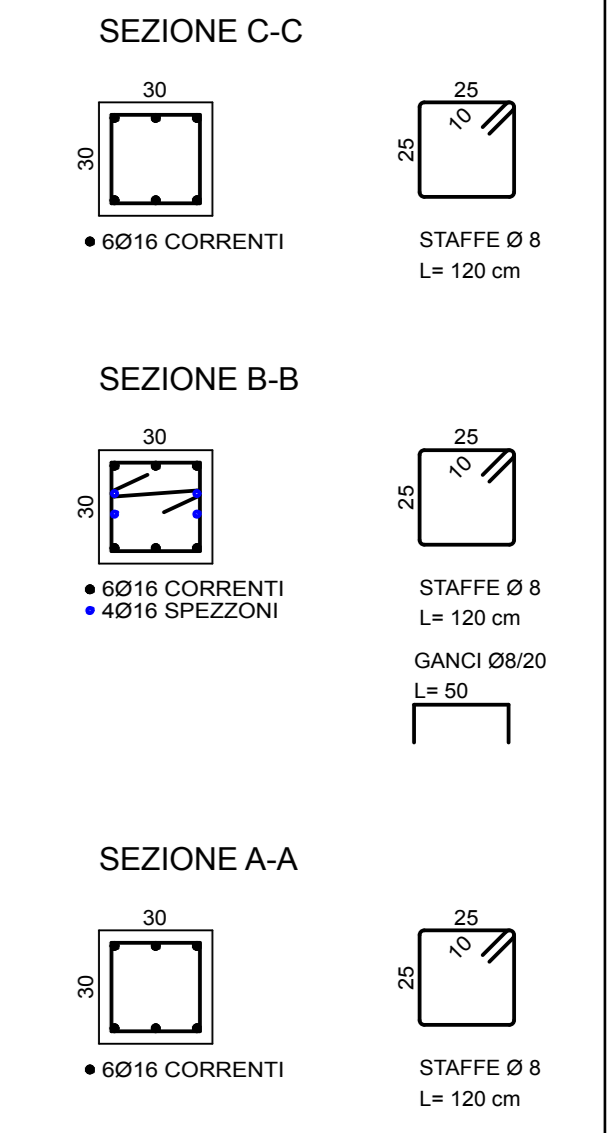
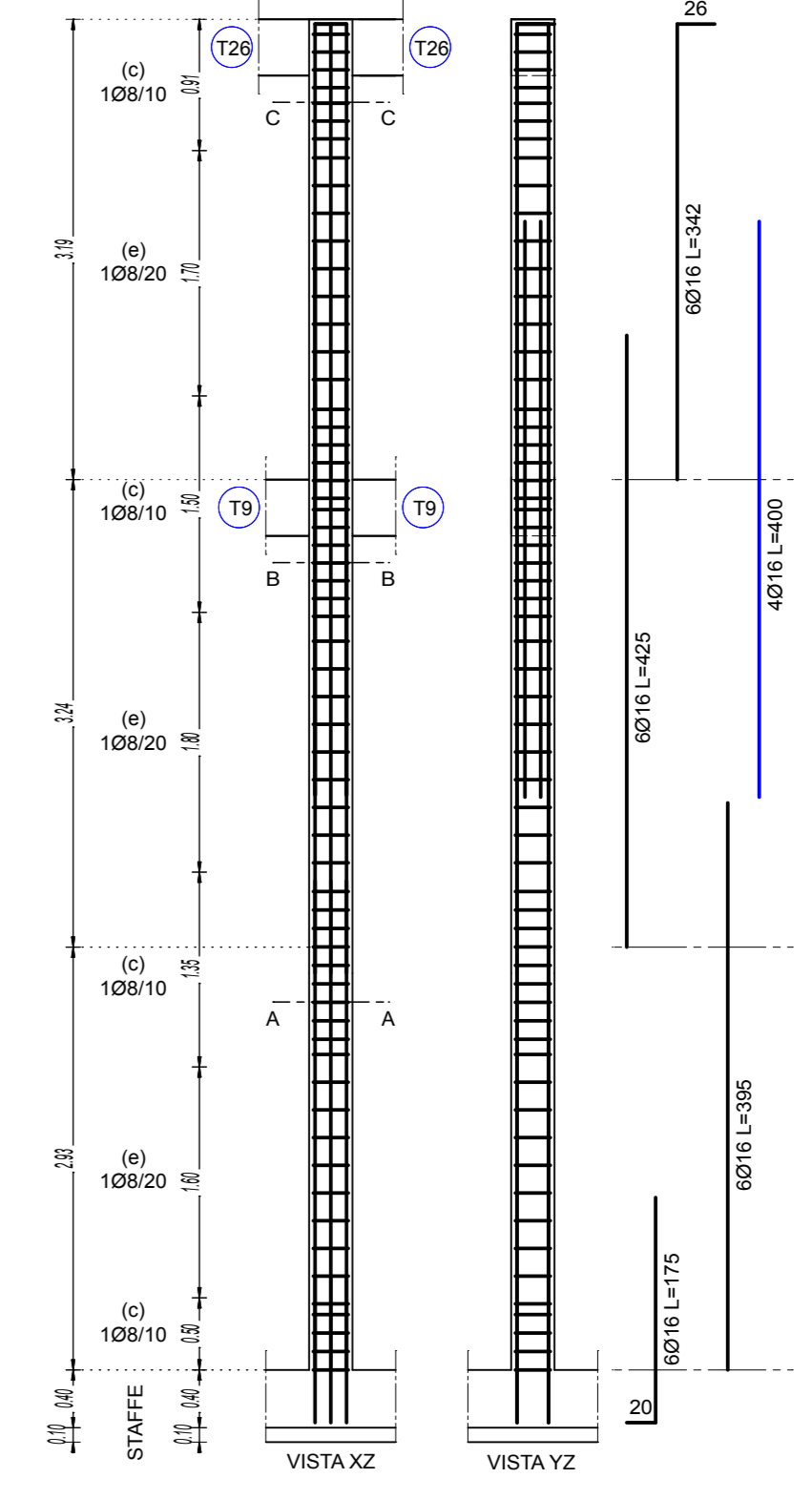
PILASTRO P11
 SCALA 1:50



PILASTRO P13
 SCALA 1:50



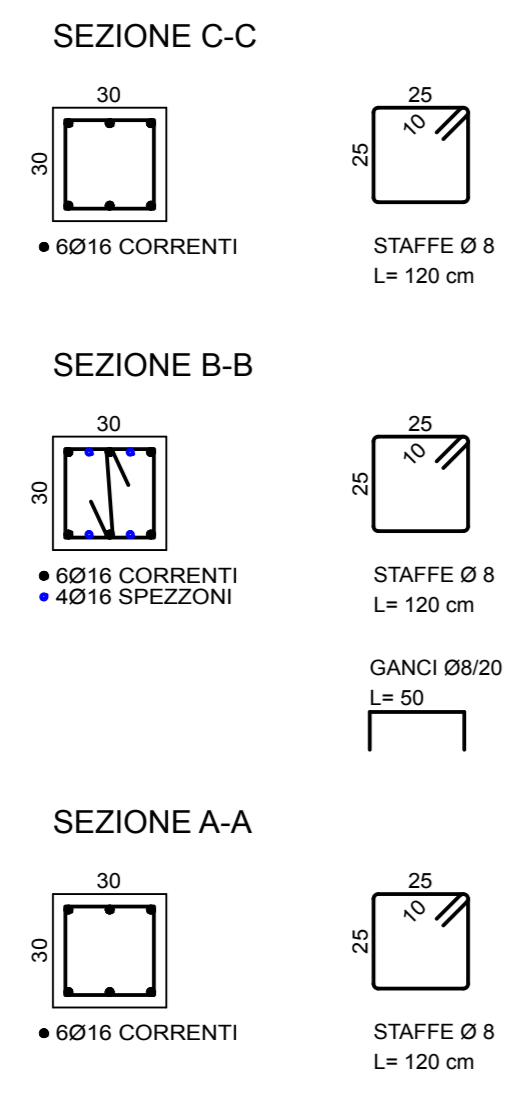
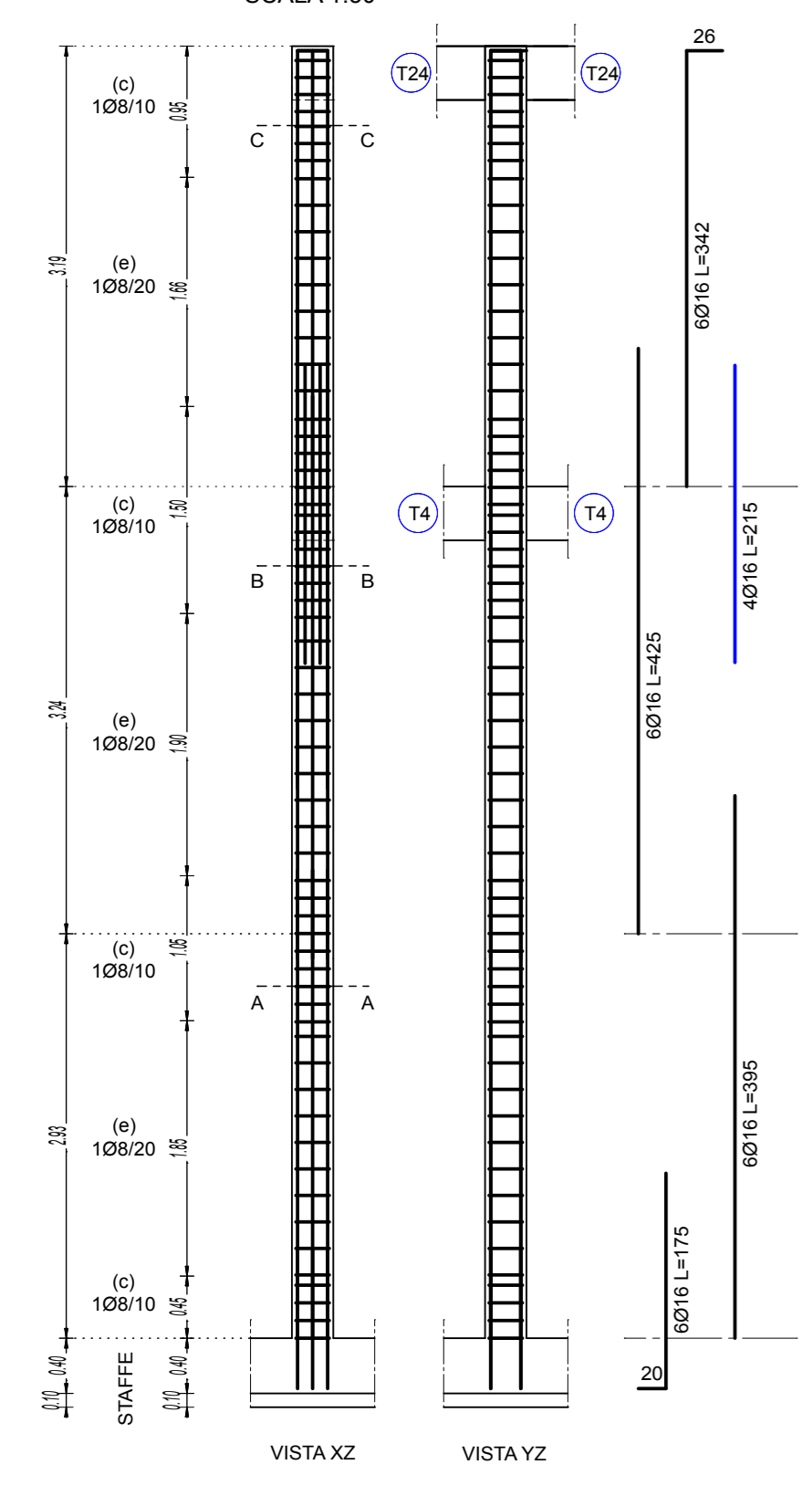
PILASTRO P13
 SCALA 1:50



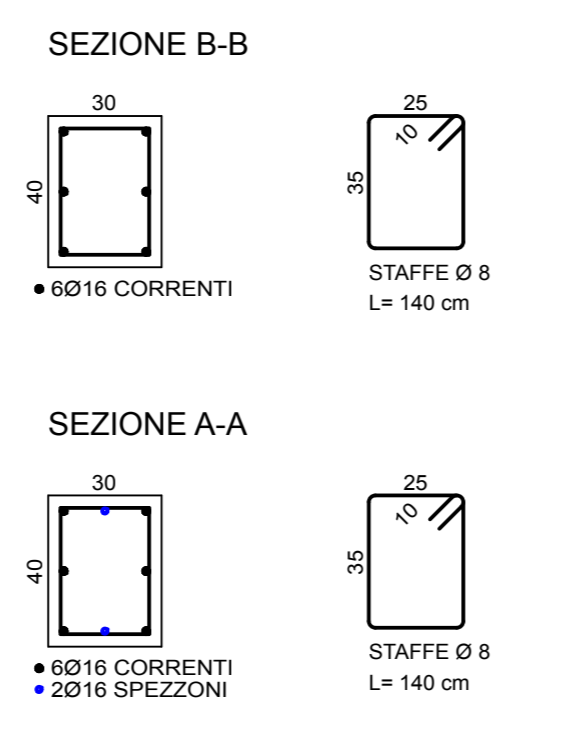
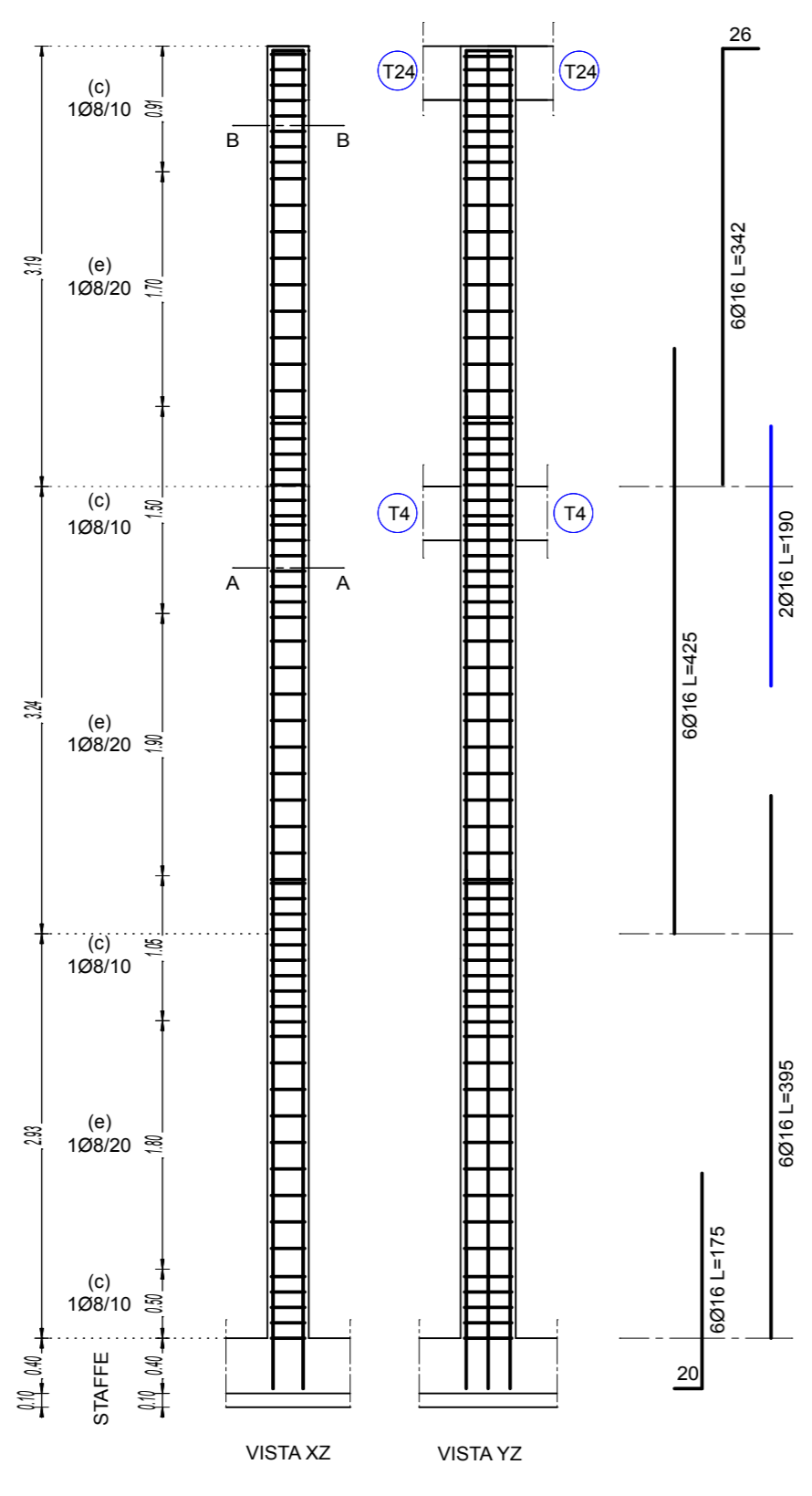
PRESCRIZIONI CALCESTRUZZO ACCIAIO STRUTTURE IN ELEVAZIONE INTERNE ED ESTERNE ESPOSTE PROTETTE
 CALCESTRUZZO TRAVI E PILASTRI C25/30
 classe di resistenza: Rck=30 N/mm²
 classe di consistenza: S4 fluida
 classe di esposizione: XC1
 cemento CEM I - 32.5 R conforme a UNI EN 197-1
 aggregati -12 mm
 rapporto a/c: 0.60
 copriferro min. 25 mm
 ACCIAIO barre e in reti: B450C

LUNGHEZZA SVILUPPO LONGITUDINALE
 PILASTRE DA VERIFICARE IN CANTIERE

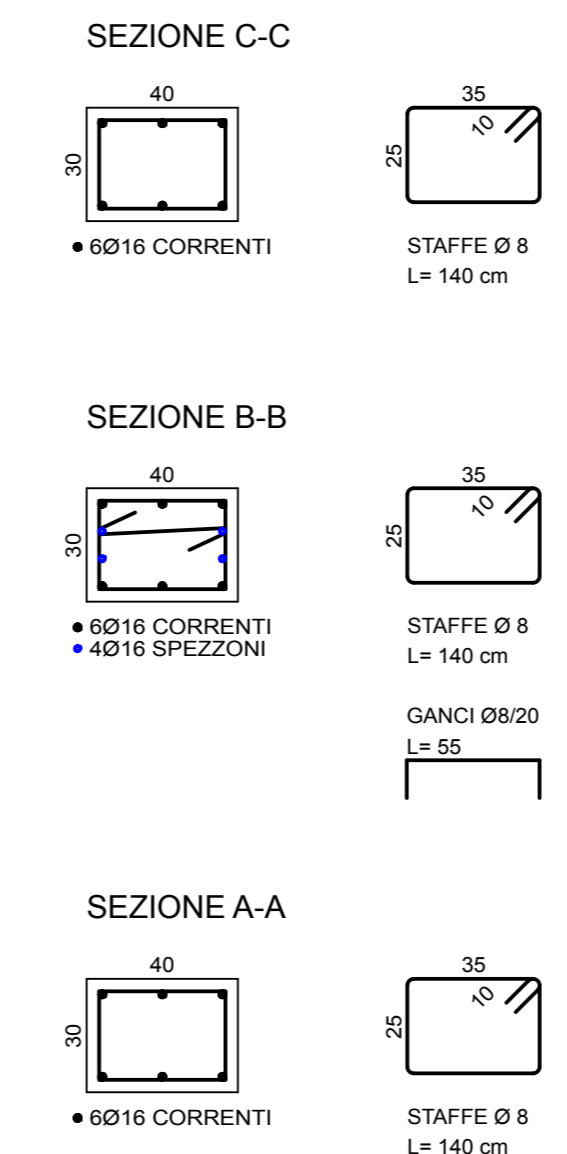
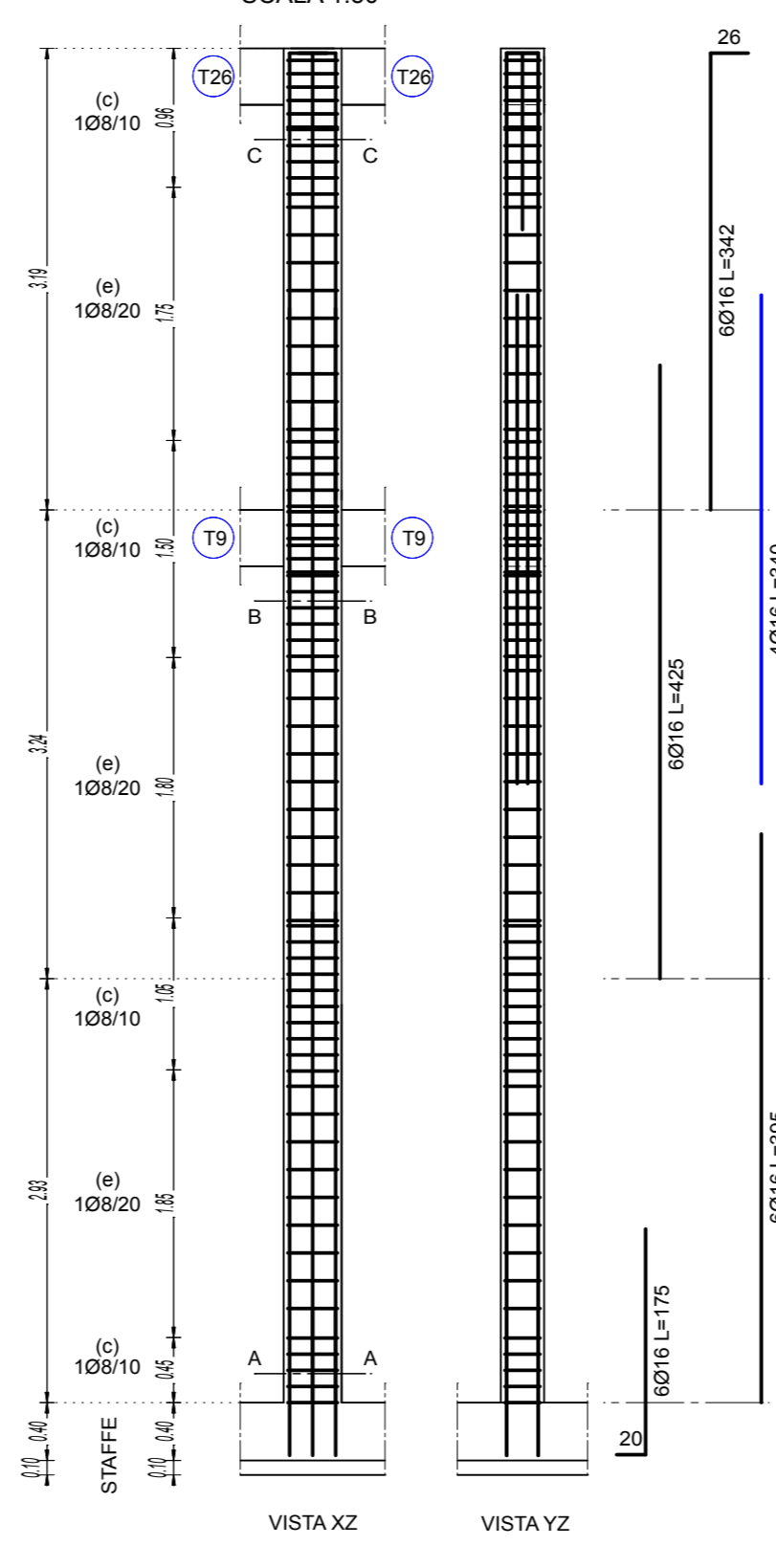
PILASTRO P9
 SCALA 1:50



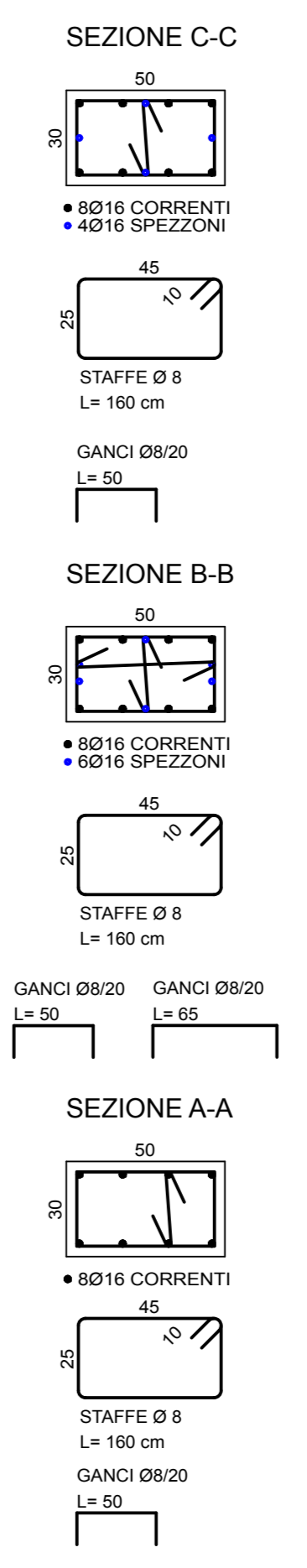
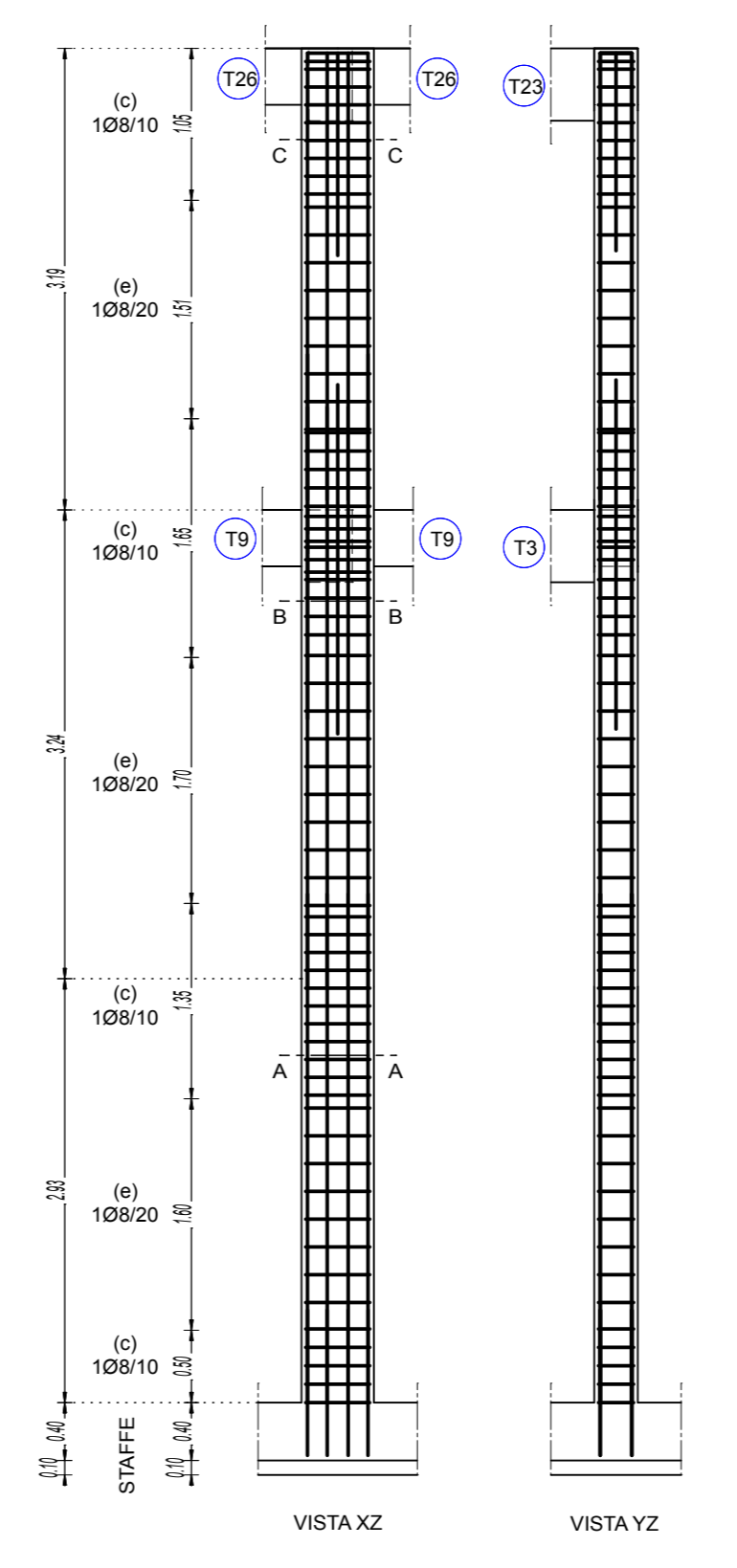
PILASTRO P10
 SCALA 1:50



PILASTRO P12
 SCALA 1:50



PILASTRO P14
 SCALA 1:50



Comune: Breganze
 Provincia: Vicenza
 Progetto: Edificio ad uso residenziale
 Tavola: **C.a. 03**
CALCOLI STRUTTURALI
 Piano primo abitazione
 Pianta - Plastrate da P9 a P15
 Progettista strutturale: ingegnere Laura Sgarbiosa TV.A.2594
 Progettista architettonico: geometra Guido Canciani TV.2626